




**DELTA**  **PT**

**TEST**

	
<b>DATE</b>	2005. 9. 8
<b>Manager</b>	

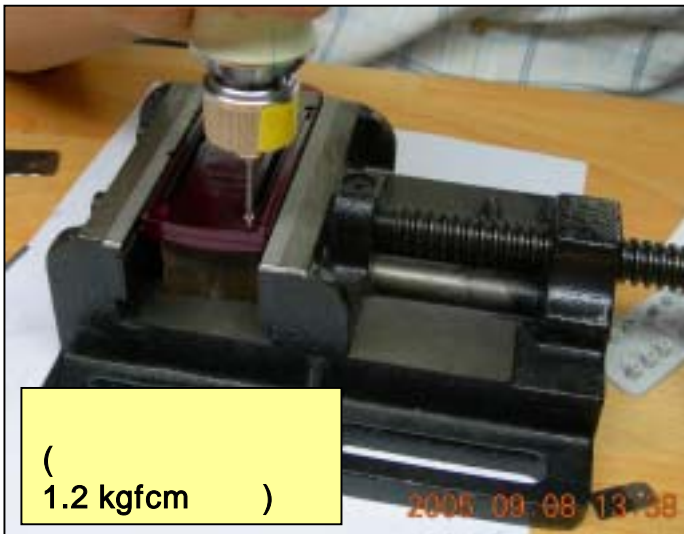


SET TAPPING SCREW DELTA PT® SCREW

TORQUE

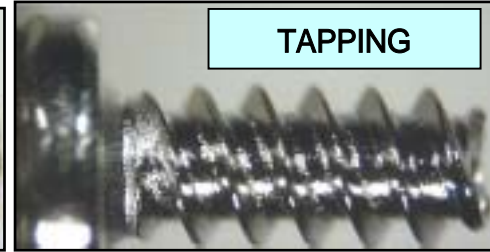
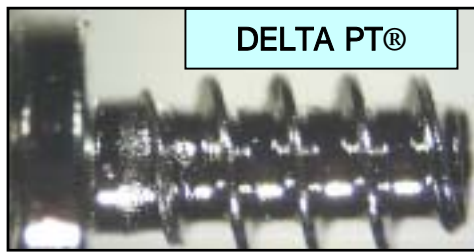


SET TAPPING SCREW DELTA PT® SCREW





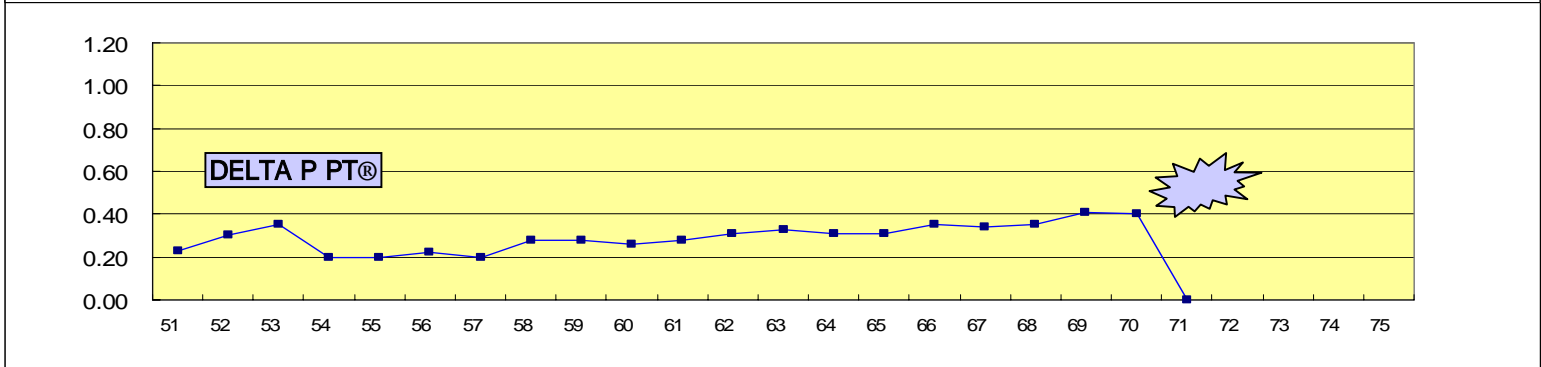
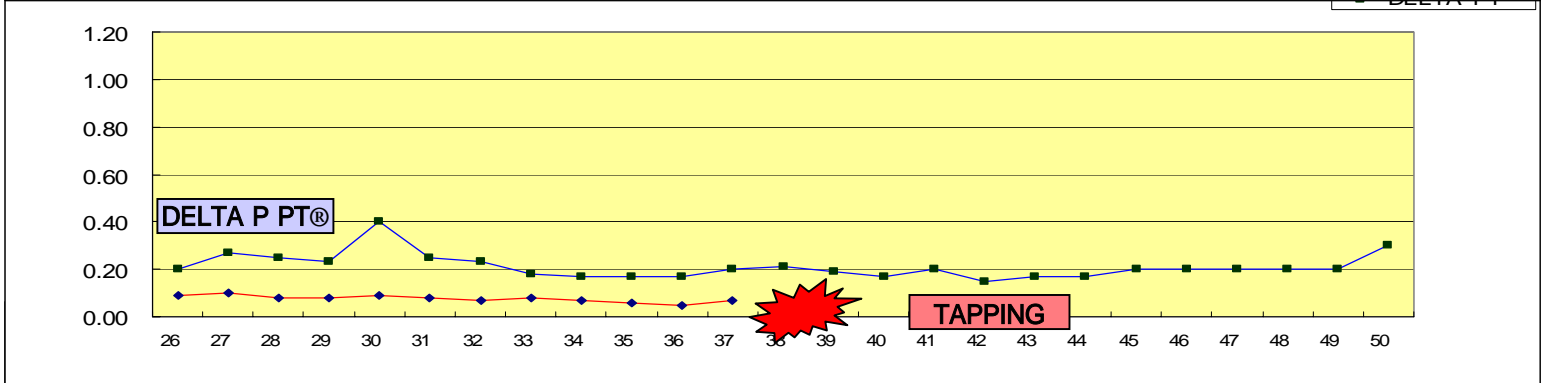
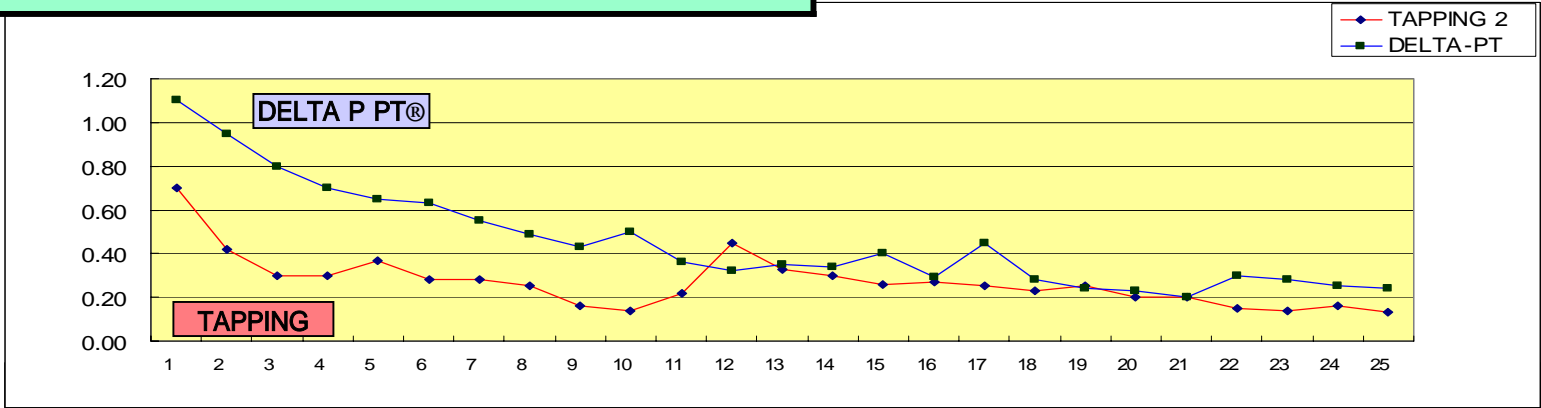
Screw	DELTA PT screw 1.8 x 4.0	Tapping-screw 1.7 x 4.0
Material:	Steel	Steel
Surface :	NI	NI
Screw major dia :	1.85	1.66
Screw core dia :	1.18	1.10
Pitch	0.706	0.566
Head style	TORX T-6	TORX T-6
Torque Limit(kgfcM)	3.7	3.6



Screw driver :	
Maker (model):	Hios (CL-3000)
torque :	1.2 kgfcM

Installation part :	
Material:	PC
Hole diameter :	1.39
external diameter :	3.20
hole No :	, , ,

**BOSS hole DATA**



DATA

TAPPING 2 VS DELTA PT TEST ( BOSS HOLE )

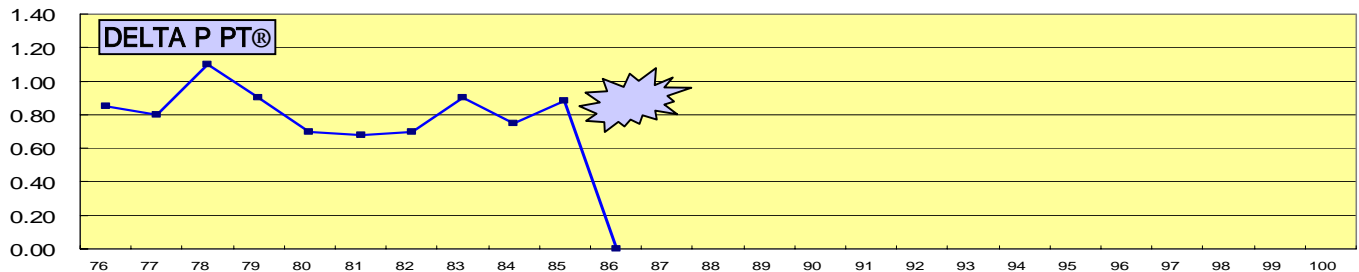
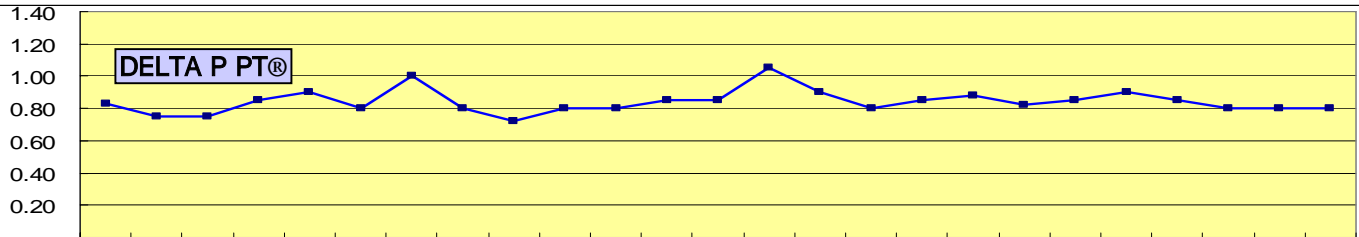
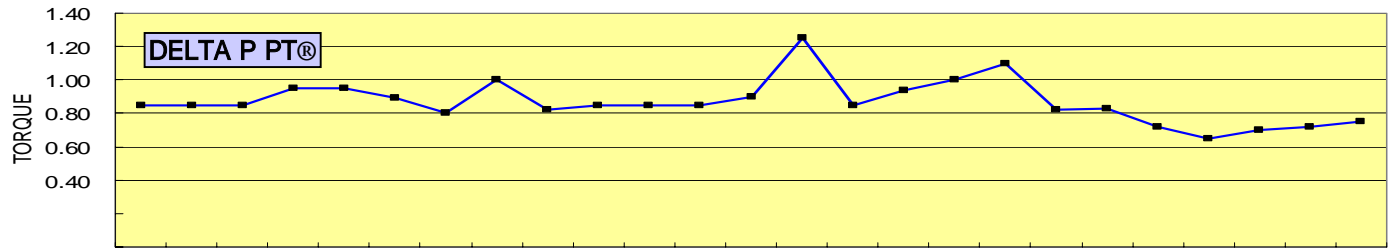
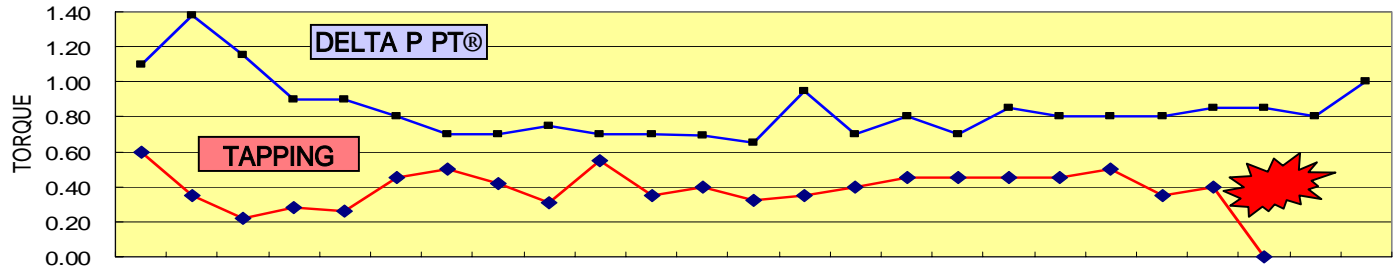
DATE : 2005. 9. 8. TEST : SKY BOSS( 1.39) Torque : 1.2 Kgf.cm

	1	2	3	4	5	6	7	8	9	10	11	12	13	14	15	16	17	18	19	20	21	22	23	24	25	
TAPPING 2 TEST BOSS NO.3	0.70	0.42	0.30	0.30	0.37	0.28	0.28	0.25	0.16	0.14	0.22	0.45	0.33	0.30	0.26	0.27	0.25	0.23	0.25	0.20	0.20	0.15	0.14	0.16	0.13	
	26	27	28	29	30	31	32	33	34	35	36	37	38	39	40	41	42	43	44	45	46	47	48	49	50	
	0.09	0.10	0.08	0.08	0.09	0.08	0.07	0.08	0.07	0.06	0.05	0.07	0.06	0.07	0.05	0.06	0.08	0.10	0.14	0.14						
	51	52	53	54	55	56	57	58	59	60	61	62	63	64	65	66	67	68	69	70	71	72	73	74	75	
	/	/	/	/	/	/	/	/	/	/	/	/	/	/	/	/	/	/	/	/	/	/	/	/	/	/
	76	77	78	79	80	81	82	83	84	85	86	87	88	89	90	91	92	93	94	95	96	97	98	99	100	
	/	/	/	/	/	/	/	/	/	/	/	/	/	/	/	/	/	/	/	/	/	/	/	/	/	/
DELTA-PT TEST BOSS NO.4	1.10	0.95	0.80	0.70	0.65	0.63	0.55	0.49	0.43	0.50	0.36	0.32	0.35	0.34	0.40	0.29	0.45	0.28	0.24	0.23	0.20	0.30	0.28	0.25	0.24	
	26	27	28	29	30	31	32	33	34	35	36	37	38	39	40	41	42	43	44	45	46	47	48	49	50	
	0.20	0.27	0.25	0.23	0.40	0.25	0.23	0.18	0.17	0.17	0.17	0.20	0.21	0.19	0.17	0.20	0.15	0.17	0.17	0.20	0.20	0.20	0.20	0.20	0.30	
	51	52	53	54	55	56	57	58	59	60	61	62	63	64	65	66	67	68	69	70	71	72	73	74	75	
	0.23	0.30	0.35	0.20	0.20	0.22	0.20	0.28	0.28	0.26	0.28	0.31	0.33	0.31	0.31	0.35	0.34	0.35	0.41	0.40						
	76	77	78	79	80	81	82	83	84	85	86	87	88	89	90	91	92	93	94	95	96	97	98	99	100	
	/	/	/	/	/	/	/	/	/	/	/	/	/	/	/	/	/	/	/	/	/	/	/	/	/	/



**BOSS hole DATA**

◆ TAPPING 2  
■ DELTA-PT



DATA

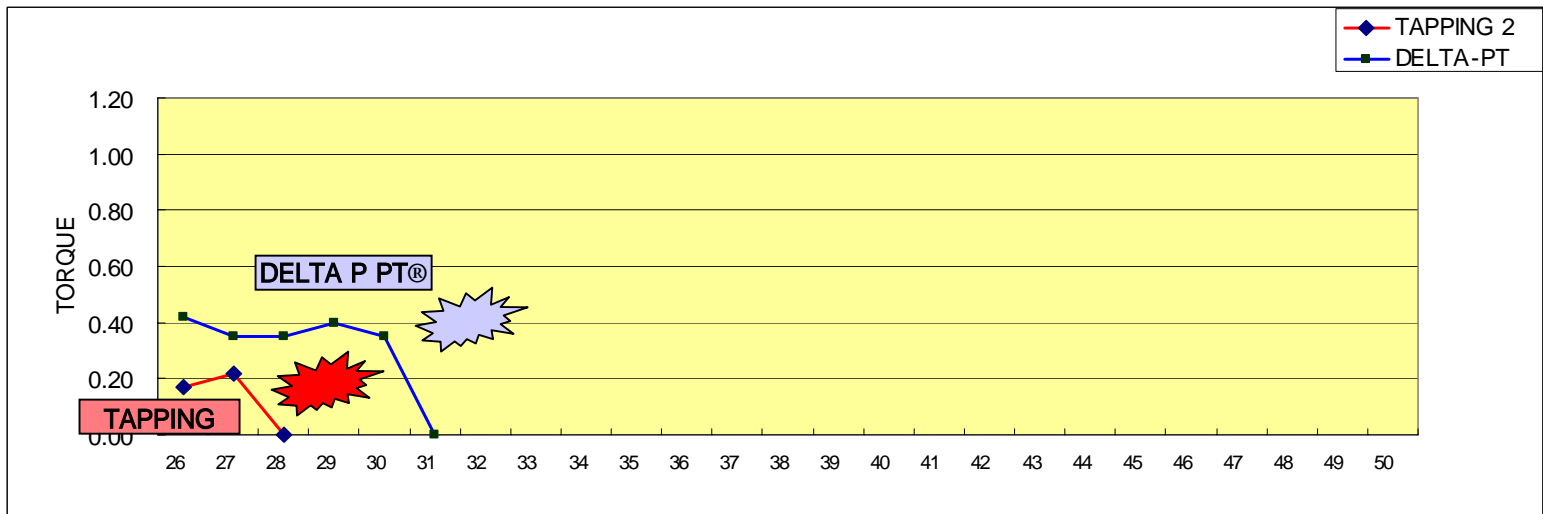
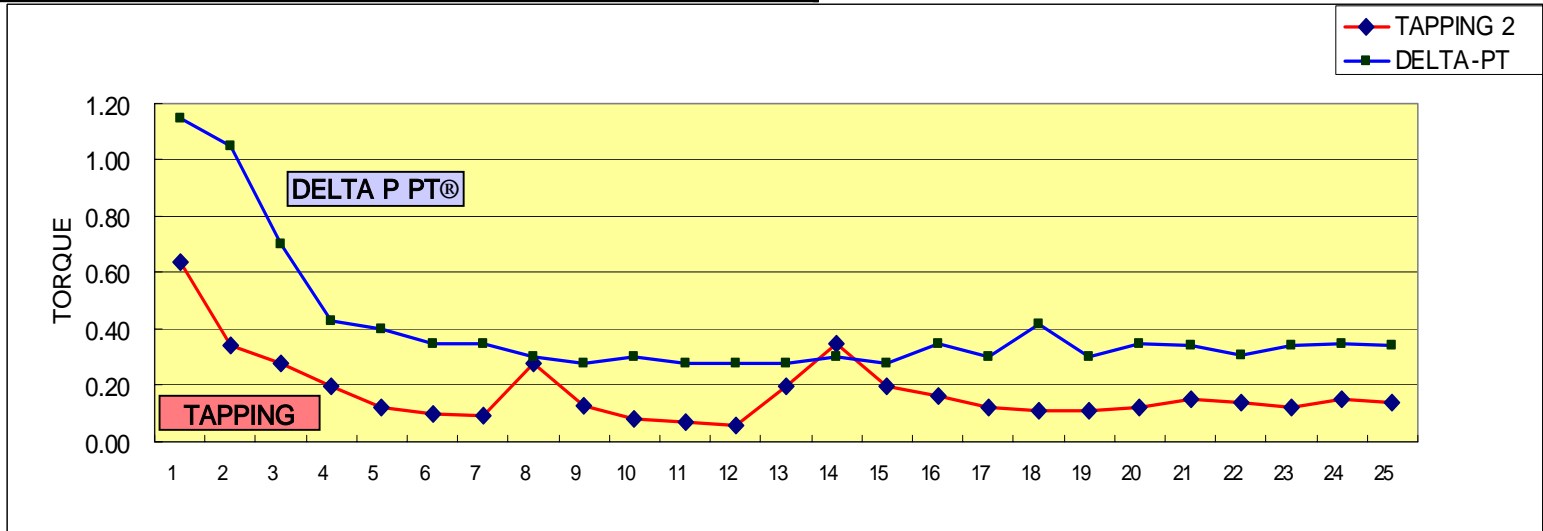
TAPPING 2 VS DELTA PT TEST (BOSS HOLE )

DATE : 2005. 9. 8. TEST : SKY BOSS( 1.39) Torque : 1.2 Kgf.cm

TAPPING 2 TEST BOSS NO.3	1	2	3	4	5	6	7	8	9	10	11	12	13	14	15	16	17	18	19	20	21	22	23	24	25	
	0.60	0.35	0.22	0.28	0.26	0.45	0.50	0.42	0.31	0.55	0.35	0.40	0.32	0.35	0.40	0.45	0.45	0.45	0.45	0.50	0.35	0.40				
	26	27	28	29	30	31	32	33	34	35	36	37	38	39	40	41	42	43	44	45	46	47	48	49	50	
	/	/	/	/	/	/	/	/	/	/	/	/	/	/	/	/	/	/	/	/	/	/	/	/	/	/
	51	52	53	54	55	56	57	58	59	60	61	62	63	64	65	66	67	68	69	70	71	72	73	74	75	
	/	/	/	/	/	/	/	/	/	/	/	/	/	/	/	/	/	/	/	/	/	/	/	/	/	/
	76	77	78	79	80	81	82	83	84	85	86	87	88	89	90	91	92	93	94	95	96	97	98	99	100	
	/	/	/	/	/	/	/	/	/	/	/	/	/	/	/	/	/	/	/	/	/	/	/	/	/	/
DELTA-PT TEST BOSS NO.4	1	2	3	4	5	6	7	8	9	10	11	12	13	14	15	16	17	18	19	20	21	22	23	24	25	
	1.10	1.38	1.15	0.90	0.90	0.80	0.70	0.70	0.75	0.70	0.70	0.69	0.65	0.95	0.70	0.80	0.70	0.85	0.80	0.80	0.80	0.85	0.85	0.80	1.00	
	26	27	28	29	30	31	32	33	34	35	36	37	38	39	40	41	42	43	44	45	46	47	48	49	50	
	0.85	0.85	0.85	0.95	0.95	0.89	0.80	1.00	0.82	0.85	0.85	0.85	0.90	1.25	0.85	0.94	1.00	1.10	0.82	0.83	0.72	0.65	0.70	0.72	0.75	
	51	52	53	54	55	56	57	58	59	60	61	62	63	64	65	66	67	68	69	70	71	72	73	74	75	
	0.83	0.75	0.75	0.85	0.90	0.80	1.00	0.80	0.72	0.80	0.80	0.85	0.85	1.05	0.90	0.80	0.85	0.88	0.82	0.85	0.90	0.85	0.80	0.80	0.80	
	76	77	78	79	80	81	82	83	84	85	86	87	88	89	90	91	92	93	94	95	96	97	98	99	100	
	0.85	0.80	1.10	0.90	0.70	0.68	0.70	0.90	0.75	0.88		/	/	/	/	/	/	/	/	/	/	/	/	/	/	



**BOSS hole DATA**





DATA

TAPPING 2 VS DELTA PT TEST (BOSS HOLE )

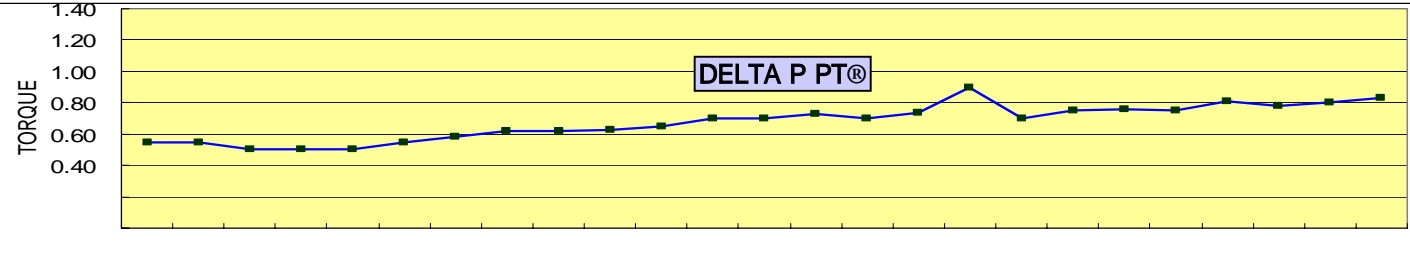
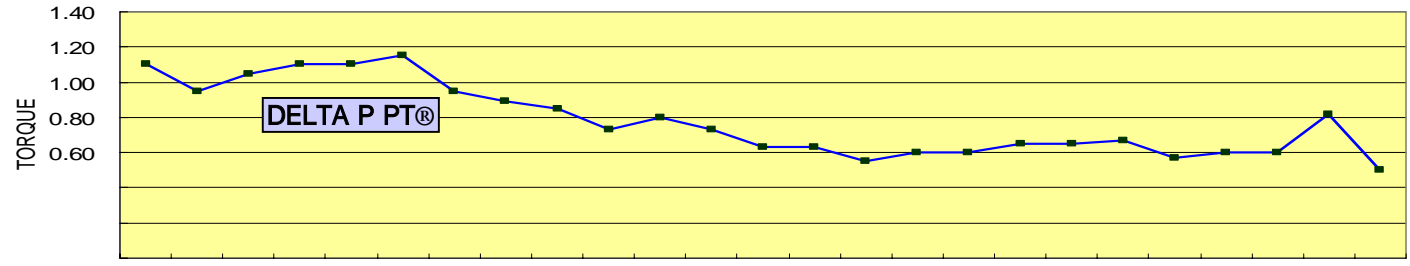
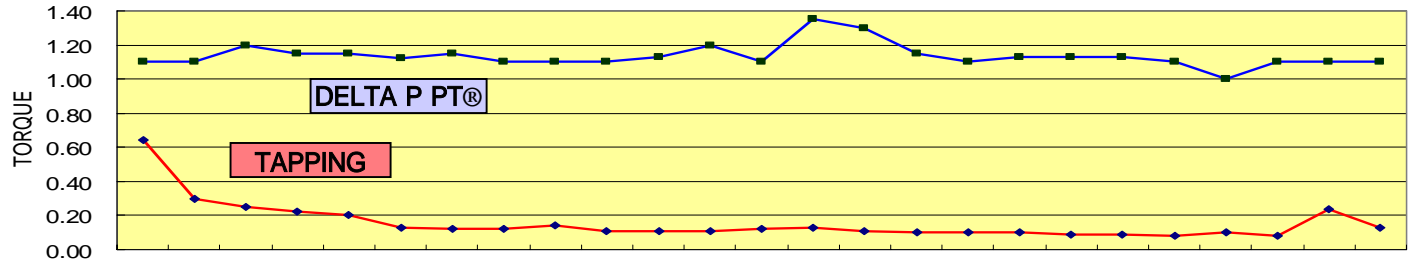
DATE : 2005. 9. 8. TEST : SKY BOSS( 1.39) Torque : 1.2 Kgf.cm

TAPPING 2 TEST BOSS NO.3	1	2	3	4	5	6	7	8	9	10	11	12	13	14	15	16	17	18	19	20	21	22	23	24	25	
	0.64	0.34	0.28	0.20	0.12	0.10	0.09	0.28	0.13	0.08	0.07	0.06	0.20	0.35	0.20	0.16	0.12	0.11	0.11	0.12	0.15	0.14	0.12	0.15	0.14	
	26	27	28	29	30	31	32	33	34	35	36	37	38	39	40	41	42	43	44	45	46	47	48	49	50	
	0.17	0.22																								
	51	52	53	54	55	56	57	58	59	60	61	62	63	64	65	66	67	68	69	70	71	72	73	74	75	
	76	77	78	79	80	81	82	83	84	85	86	87	88	89	90	91	92	93	94	95	96	97	98	99	100	
DELTA-PT TEST BOSS NO.4	1	2	3	4	5	6	7	8	9	10	11	12	13	14	15	16	17	18	19	20	21	22	23	24	25	
	1.15	1.05	0.70	0.43	0.40	0.35	0.35	0.30	0.28	0.30	0.28	0.28	0.28	0.30	0.28	0.35	0.30	0.42	0.30	0.35	0.34	0.31	0.34	0.35	0.34	
	26	27	28	29	30	31	32	33	34	35	36	37	38	39	40	41	42	43	44	45	46	47	48	49	50	
	0.42	0.35	0.35	0.40	0.35																					
	51	52	53	54	55	56	57	58	59	60	61	62	63	64	65	66	67	68	69	70	71	72	73	74	75	
	76	77	78	79	80	81	82	83	84	85	86	87	88	89	90	91	92	93	94	95	96	97	98	99	100	



**BOSS hole DATA**

● TAPPING 2  
■ DELTA P-PT



DATA

TAPPING 2 VS DELTA PT TEST (BOSS HOLE )

DATE : 2005. 9. 8. TEST : SKY BOSS( 1.39) Torque : 1.2 Kgf.cm

TAPPING 2 TEST BOSS NO.5	1	2	3	4	5	6	7	8	9	10	11	12	13	14	15	16	17	18	19	20	21	22	23	24	25	
	0.64	0.30	0.25	0.22	0.20	0.13	0.12	0.12	0.14	0.11	0.11	0.11	0.12	0.13	0.11	0.10	0.10	0.10	0.09	0.09	0.08	0.10	0.08	0.24	0.13	
	26	27	28	29	30	31	32	33	34	35	36	37	38	39	40	41	42	43	44	45	46	47	48	49	50	
	0.14	0.20	0.13	0.15	0.15	0.14	0.13	0.13	0.14	0.14	0.15	0.15	0.16	0.16	0.20											
	51	52	53	54	55	56	57	58	59	60	61	62	63	64	65	66	67	68	69	70	71	72	73	74	75	
	76	77	78	79	80	81	82	83	84	85	86	87	88	89	90	91	92	93	94	95	96	97	98	99	100	
DELTA-PT TEST BOSS NO.6	1	2	3	4	5	6	7	8	9	10	11	12	13	14	15	16	17	18	19	20	21	22	23	24	25	
	1.10	1.10	1.20	1.15	1.15	1.12	1.15	1.10	1.10	1.10	1.13	1.20	1.10	1.35	1.30	1.15	1.10	1.13	1.13	1.13	1.10	1.00	1.10	1.10	1.10	
	26	27	28	29	30	31	32	33	34	35	36	37	38	39	40	41	42	43	44	45	46	47	48	49	50	
	1.10	0.95	1.05	1.10	1.10	1.15	0.95	0.89	0.85	0.73	0.80	0.73	0.63	0.63	0.55	0.60	0.60	0.65	0.65	0.67	0.57	0.60	0.60	0.82	0.50	
	51	52	53	54	55	56	57	58	59	60	61	62	63	64	65	66	67	68	69	70	71	72	73	74	75	
	0.55	0.55	0.50	0.50	0.50	0.55	0.58	0.62	0.62	0.63	0.65	0.70	0.70	0.73	0.70	0.74	0.90	0.70	0.75	0.76	0.75	0.81	0.78	0.80	0.83	
	76	77	78	79	80	81	82	83	84	85	86	87	88	89	90	91	92	93	94	95	96	97	98	99	100	
	0.80	0.75	0.75	0.70	0.77	0.75	0.80	0.80	1.00	0.85	0.80	0.95	0.85	0.85	0.85	0.88	0.88	0.90	0.75	0.75	0.80	0.85	0.75	0.65	0.63	





			Torque	Max Torque	Min Torque
Hole No.					[ : kgfcm]
DELTA PT®:	71	Stripping	0.32	1.10	0.15
Tapping :	46	Stripping	0.18	0.70	0.05
Hole No.					[ : kgfcm]
DELTA PT®:	86	Stripping	0.85	1.38	0.65
Tapping :	23	Stripping	0.40	0.60	0.22
Hole No.					[ : kgfcm]
DELTA PT®:	31	Stripping	0.40	1.15	0.28
Tapping :	28	Stripping	0.18	0.64	0.06
Hole No.					[ : kgfcm]
DELTA PT®:	100		0.85	1.35	0.50
Tapping :	41	Stripping	0.15	0.64	0.08
Torque Limit [ : kgfcm]	<b>Installation depth</b>				
DELTA PT®:	3.5mm	3.0mm			
Tapping :	3.15	2.55			
	2.80	2.10			

: TAPPING 2

torque: torque 2

Boss 3.2mm Delta PT ,

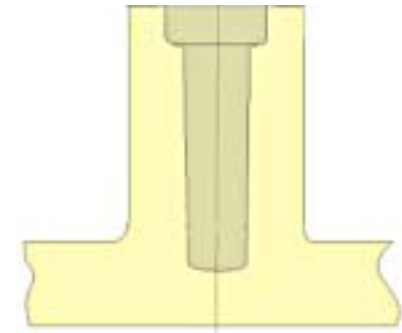


[ ] EJOT BOSS



Installation part :

Material:	PC
Trade name :	Lupoy
Hole diameter :	1.37
counterbore dia :	1.90
counterbore depth :	0.60
external diameter :	3.60
hole No :	[18]-B



EJOT BOSS DATA

● TAPPING 2  
■ DELTA-PT

